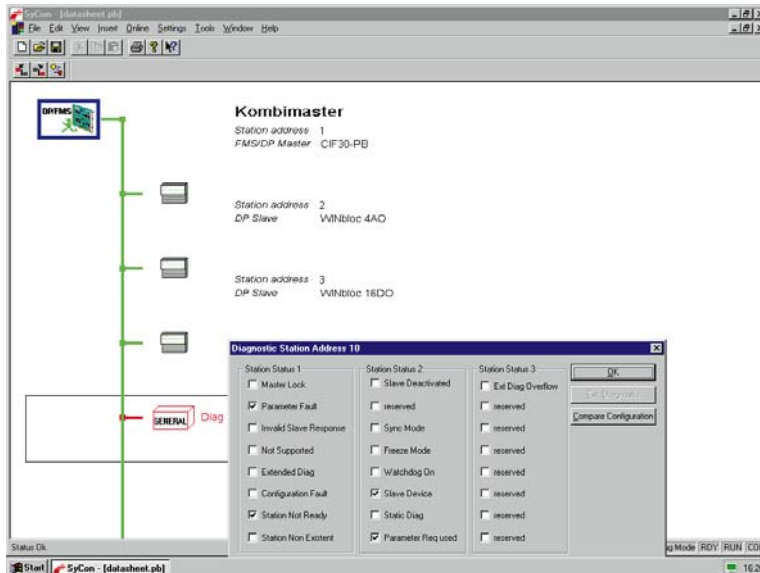


## System Configurator SyCon



- Unified operating desktop for all fieldbus systems
- Supports all Slaves
- Graphic input of the fieldbus system
- Configuration of the individual bus participants
- Plausibility testing of the bus parameters and the process image
- Entry of tag names for OPC Server
- On-line diagnostic and statistic functions
- Writing and reading I/O data
- Export function
- Uses GSD, EDS or other device description files
- Open configuration data base based on MS Access
- Modular structure
- Written in C++
- OEM version can be provided



Grid Connect Inc.  
1841 Centre Point Cr. #143  
Naperville, IL 60563 USA  
+1 630 245-1445, +1 630 245-1717 FAX  
[www.factorycomm.com](http://www.factorycomm.com)

## Description

SyCon is the universal System Configurator with a unified user desktop for all our PC cards. As a basis for the configuration, so-called device description files or electronic data sheets, in which the characteristics of the bus participants are defined, are used. These are standardised for some fieldbus systems and are supplied by the device manufacturer. For other cases, SyCon offers this function for input.

The bus structure is determined by means of a graphic Editor and the individual participant are placed at it. A double click on the participant opens the corresponding configuration window. In a table there are displayed all the possible modules or data from which the current participant configuration will be created. The address of the data in the process image is issued manually or automatically by the Configurator. The parameterisation of the participant is carried out by means of the selection or entry of the values of the respective fieldbus system. The final step is the defining of the bus parameters. This is limited to the definition of the transmission rate, as all other parameters are independently calculated on the basis of the data in the device description files. The entire configuration is subsequently transferred to the PC card and saved there. For cards that are located in another PC, this is carried out serially over the COM port and the serial diagnostic interface on the PC card.

All process variables can be provided with a symbolic name. These are made available as an interface to a primary visualisation or SoftPLC or for our DDE and OPC Server. In this way the entry and comparison of variables addresses becomes superfluous.

The entire configuration is saved to an MS Access data base and can be printed out as documentation or can be made available to other programs by means of an export interface.

SyCon offers comprehensive diagnostic aids. In the diagnostic mode all the statuses of the participants are cyclically called up and presented in red or green depending on whether a data exchange is taking place with it at the time. By double clicking on 'red' bus participants, the cause of the error is shown in clear text as far as possible. Further functions include the reading out of error saves, display of statistic counters and the input and output of process data.

SyCon is provided as a Demo version with every device. A maximum of two bus participants can be configured with it. This limitation for the respective fieldbus system is lifted by means of a licensing code.

## Technical Data

Fieldbus System	CANopen DeviceNet InterBus PROFIBUS-DP PROFIBUS-FMS SDS
Device description file	*.EDS *.GSD
Max. numbers of stations	255 or depending on the fieldbus system
Cards per PC	Max. 4
COM interfaces	Max. 4
Database format	MS Access

### System Requirements

PC	Min. 486 with CD-ROM
Hard disk memory	Min. 10 MB
RAM	Min. 16 MB
Graphic resolution	Min. 800 x 600
Operating system	Windows 95 Windows NT 4.0

## Product Overview

Type	Fieldbus	Note
SYCON-CO	CANopen	Single user licence, the company and the name of the licensee must be given when ordering
SYCON-DN	DeviceNet	
SYCON-IB	InterBus	
SYCON-PB	PROFIBUS	
SYCON-SDS	SDS	

## Related Products

Type	Article
CIF-OPC	OPC Server, single PC licence
CIF-DDE	DDE Server, single PC licence
CIF-xxx	PC cards
KAB-SRV	Service cable



Grid Connect Inc.  
1841 Centre Point Cr. #143  
Naperville, IL 60563 USA  
+1 630 245-1445, +1 630 245-1717 FAX  
www.factorycomm.com