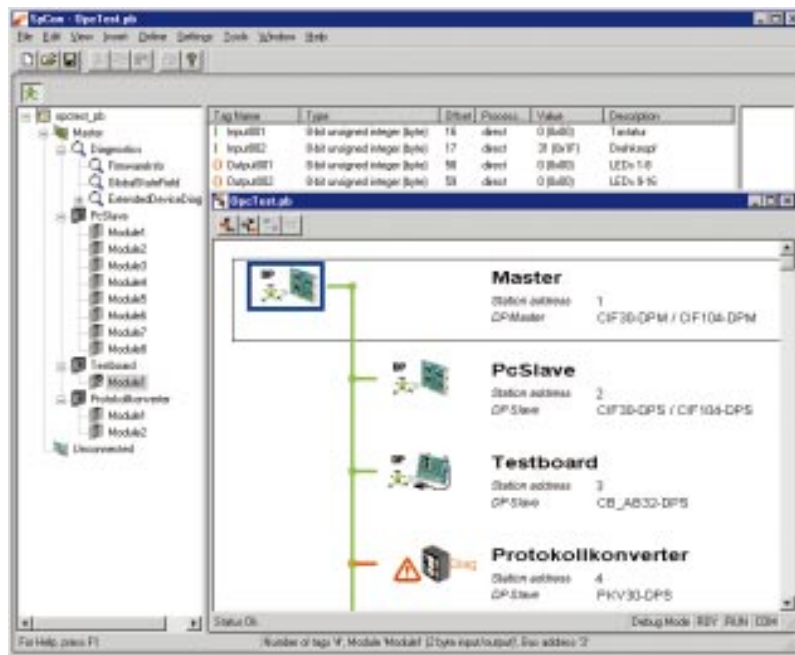


**OPC Server  
for  
Windows 95  
Windows NT**



- Functions in accordance with OPC 2.0
- Supply concurrent data from up to four different fieldbus systems
- Integrated System Configurator SyCon for configuration of the fieldbus network
- Browse function for call-up of configuration data
- Offline simulation mode
- Local and remote access via network
- Access via Automation Interface possible
- Supports all PC card formats such as ISA, PCI, PCMCIA
- Supports all leading fieldbus systems including PROFIBUS-FMS



Grid Connect Inc.  
1841 Centre Point Cr. #143  
Naperville, IL 60563 USA  
+1 630 245-1445, +1 630 245-1717 FAX  
www.factorycomm.com

## Description

OPC stands for 'OLE for Process Control' and defines the data exchange within a Windows environment. This can be a user program such as a process visualisation or a SoftPLC but it can also be a fieldbus interface which provides process data by means of a standardised OPC interface.

The particular advantage lies in the manufacturer independent of the OPC interface. All programs which can call-up data as an OPC client, work together with our OPC Server. Thus, there is available a simple and unified access to all leading fieldbus systems.

The data transfer is carried out on the Client/Server principle. Here, the fieldbus interface must prepare the OPC Server function, whilst the application calls up the data as Client.

Our OPC Server can administer up to four PC cards, of different types as well as also of different fieldbus systems. It provides the application with the useful data in the

required data format without the user having to bother about the details as to how it accesses the data. The information it needs is retrieved from the configuration data base of the System Configurator.

During the configuration of the fieldbus system with the aid of the SyCon System Configuration, the user defines the process variables and determines so-called 'tag names'. The OPC Client calls up the process variables by using these names of the variables.

In addition the Client can call up, for example, of a visualisation via the OPC browse function all the variable definitions from the SyCon. This saves a duplicated entry of the variable names and the tedious balancing of the process variables between application and fieldbus system.

## Technical Data

Specification	OPC 2.0
Operating system	Windows 95 Windows NT
Mode	Local Remote
Cards per PC	max. 4
Type of cards	ISA PCI PCMCIA

### Functions

Custom Interface  
Automation Interface  
IOPC Browse Server Address Space

### Supported Fieldbus

AS-Interface  
CANopen  
ControlNet  
DeviceNet  
InterBus  
PROFIBUS  
SDS

## Product Overview

Type	Note
CIF-OPC	OPC Server with integrated System Configurator SyCon, single PC licence

## Related Products

Type	Article
CIF-xxx	PC cards



Grid Connect Inc.  
1841 Centre Point Cr. #143  
Naperville, IL 60563 USA  
+1 630 245-1445, +1 630 245-1717 FAX  
[www.factorycomm.com](http://www.factorycomm.com)