

# PCAN-PCI



Hardwaremanual

Version 1.1

Release April 2003

Names for products in this manual, that are registered trademarks, are not separately marked. Therefore the missing of the ® sign does not implicate, that the name is a free trade name. Furthermore the used names do not indicate patent rights or protection of designs. PEAK-System Technik GmbH doesn't take the legal responsibility nor any warranties or the liability for consequential damage, that arises from wrong use or wrong operation of the hardware. Further, PEAK-System Technik GmbH reserves the right to revise this publication and to make changes to the layout and design of the hardware at any time, without obligation to notify any person or entity of such revisions or changes. Thus the company PEAK-System Technik GmbH comes in no obligations.

© Copyright 1999-2003 PEAK-System Technik GmbH - All rights reserved.

No part of this manual may be reproduced, processed, duplicated, transmitted or stored under any retrieval system in any form without the written consent of the company PEAK-System Technik GmbH.

PEAK-System Technik GmbH  
Otto-Roehm-Straße 69  
D-64293 Darmstadt  
Germany

Phone: +49 (0)6151 - 8173-20  
Fax: +49 (0)6151 - 8173-29  
[info@peak-system.com](mailto:info@peak-system.com)  
<http://www.peak-system.com>

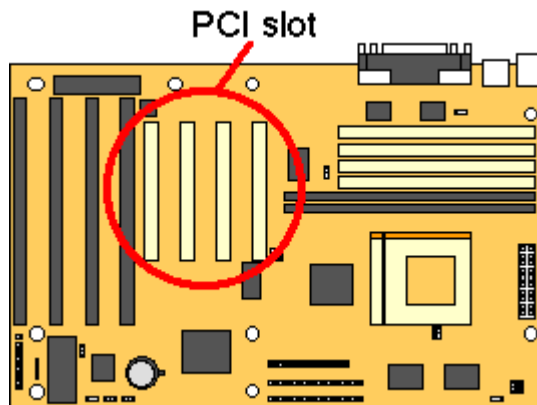
## Table of contents

<b>STEP 1: INSTALL THE PCAN-PCI-CARD</b>	<b>4</b>
<b>STEP 2: INSTALL THE PCAN PCI DRIVERS</b>	<b>5</b>
Windows 95/98 installation	5
Windows NT installation:	8
<b>APPENDIX</b>	<b>9</b>
Trademarks	9
System requirements	9
Connectors	9

## Step 1: Install the PCAN-PCI-Card

For installing the PCAN-PCI-Card follow the instructions below:

1. Switch off the computer and all connected peripherals such as printer and monitor.  
Remove all plugs from their sockets.
2. Remove the housing from your computer. See your computer manual for further details.
3. Find a free slot for the PCAN-PCI-Card. Remove the slot cover, take the PCAN-PCI-Card out of the antistatic covering by holding it at the edges and insert the card carefully into the slot. Fix the card with the slot cover screw.



4. Connect your CAN-Cable to the external SUB-D-Plug (pay attention to the configuration of the SUB-D-Plugs according to CiA DS-102-1, take a look at the supplement).
5. Place the housing back on the computer and switch on the computer and all peripherals..

## Step 2: Install the PCAN PCI Drivers

### *Windows 95/98 installation*

1. Switch on your computer.

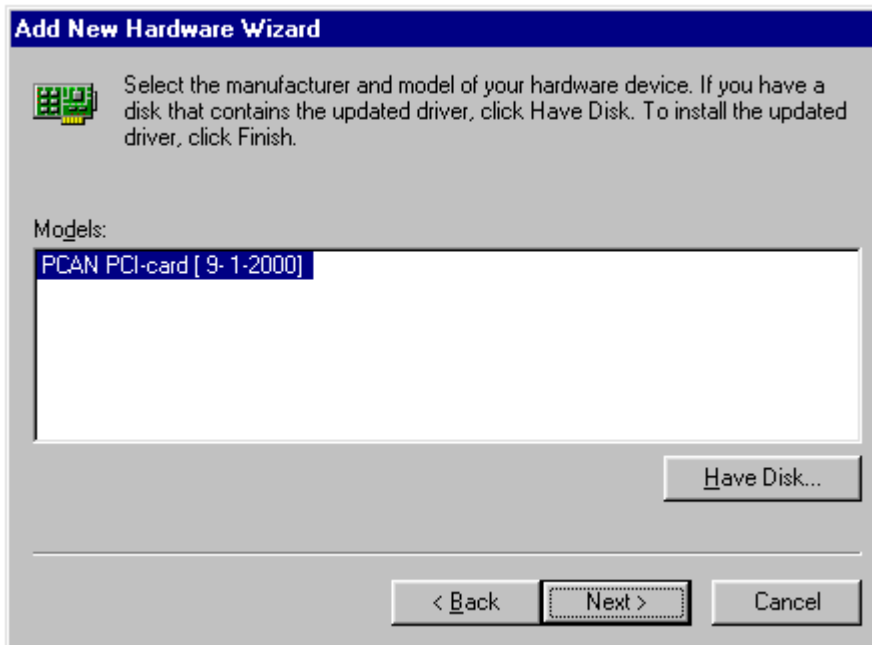
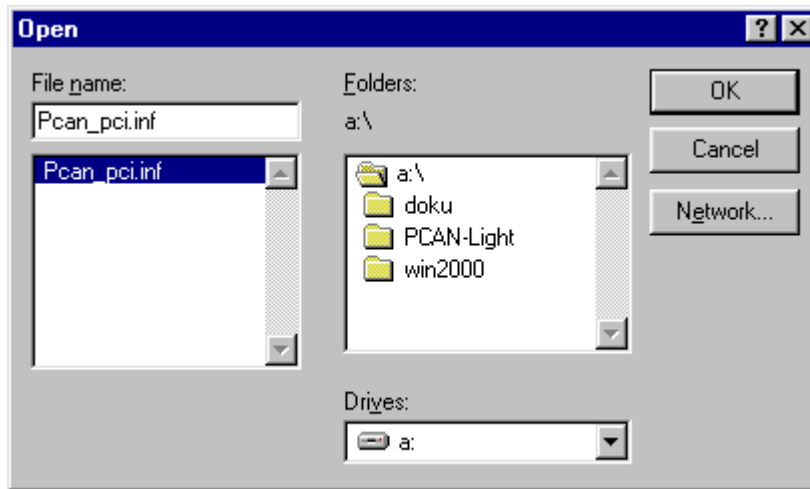
After starting your operating system the **Add New Hardware Wizard** is visible:



2. Read the instructions on your screen and push **Next**.
3. Choose **Display a list of all the drivers in a specific location, so you can select the driver you want**. Push **Next**.



4. Insert the PCAN-PCI-Disk. Choose PCAN-PCI.inf. Push **OK**. Follow the instructions.



You can check that the Drivers are correctly installed by going into the Control Panel and selecting the **System**-symbol . Go into the **Device Manager** and select the CAN-Hardware. If there is a ?- or a !- symbol next to the hardware drivers, push **Remove** and repeat the steps 1-4.

5. Start PCAN-PCI.exe from the PCAN-PCI-Disk.
6. For installing follow the instructions an your screen. Then reboot your computer.

***Windows NT installation:***

1. Switch on your computer.
2. Insert the PCAN-PCI-Disk. Start PCAN-PCI.exe from the PCAN-PCI-Disk.
3. For installing follow the instructions an your screen. Then reboot your computer.

# Appendix

## Trademarks

- MS-DOS/Windows are registered trademarks from the Microsoft Corporation

## System requirements

- IBM compatible PC, 586 or higher
- Windows 95B, 98, NT4 (SP6) or higher
- 32 MB RAM
- 1 free PCI-Slot
- min. 5 MB free disk space

## Connectors

- CAN-Plug SUB-D 9 according to CiA DS-102-1

Pin	Pin Assignment
1	optional 5V
2	CAN-L
3	CAN-GND
4	not connected
5	not connected
6	CAN-GND
7	CAN-H
8	not connected
9	optional 5V

