

# Non-line-of-sight :: 900 MHz

The AW900x replaces costly wiring with a wireless Ethernet bridge that can enable remote Wi-Fi APs, Ethernet pan/tilt/zoom security cameras, VoIP phones, or Internet kiosks. AvaLAN's product offers the ideal combination of price, range, data rate, security, interference avoidance, quality-of-service, and ease-of-use.



## AW900x Kit

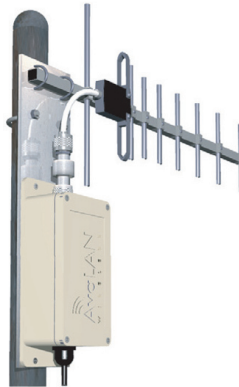
Long-range 900 MHz wireless outdoor Ethernet bridge. Kit includes:

- (2) AW900x outdoor radios
- (2) 110 VAC to 12 VDC power adapters
- (2) Power over Ethernet injectors

Requires antennae: Use with AW2, AW5H-900, AW5P-900, AW6, AW10, AW11, or AW15 – all FCC approved

## Features

- Foliage penetrating, non-line-of-sight wireless Ethernet bridging
- Does not interfere with Wi-Fi networks
- Highest Quality of Service (QoS) available – synchronous point-to-point protocol enables extremely low data latency and jitter
- 128 bit encrypted payload protection provides secure data delivery
- Simple plug and play – pre-configured as matched pairs with no user programming required
- Power over Ethernet enabled
- Operates in the 902-928 MHz band and does not require an FCC license to operate or install
- VLAN extensions supported



## Benefits

The AW900x is the best solution when:

- a Broadband Ethernet drop will cost too much or is impractical to install
- guaranteed DSL-rate throughput is required (kiosks/Wi-Fi APs/PTZ cameras)
- guaranteed latency for voice or video is required (PTZ cameras/VoIP)
- Wi-Fi is too slow due to saturation or 2.4 GHz interference (airport/mall/PTZ cameras)
- ultra-low current consumption is required (1 Watt/solar powered systems)

## Range

### Antennas:

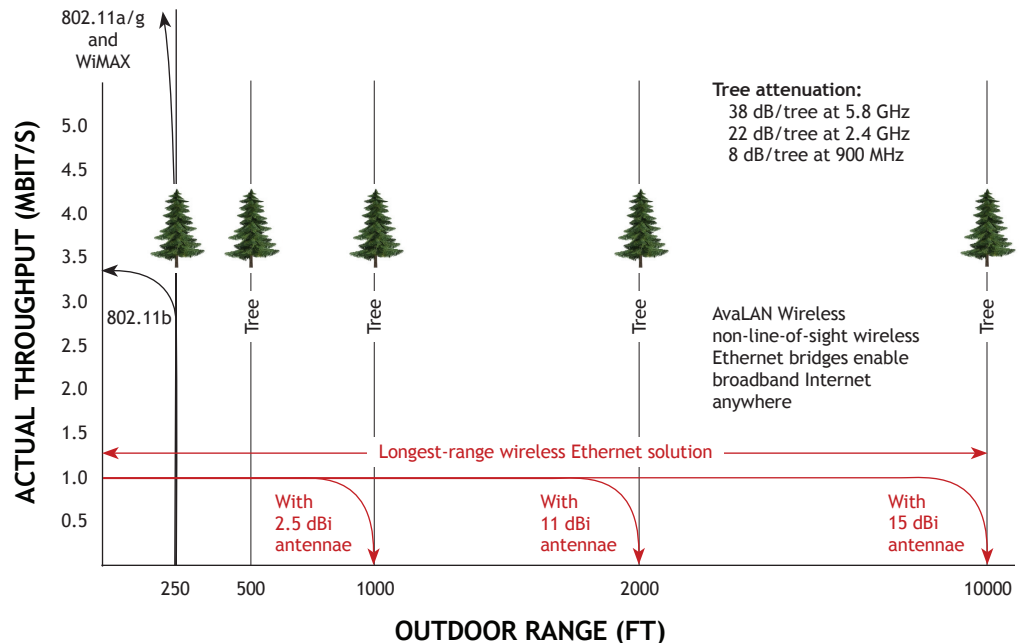
- 11 dBi (shown)
- 15 dBi (available)

### Non-line-of-sight range (foliage)

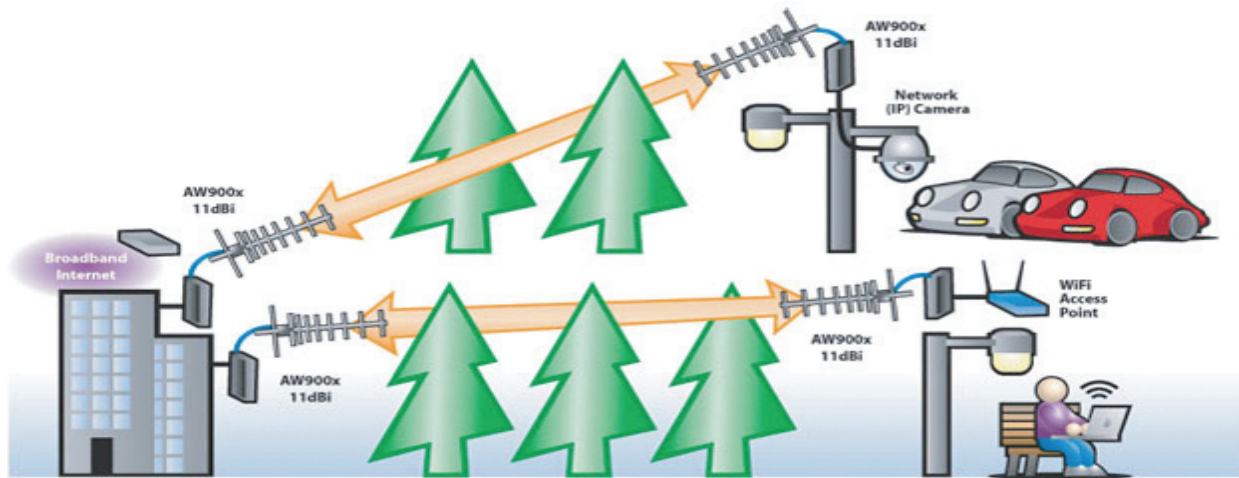
- Up to 10x the range of Wi-Fi (with 15 dBi directional antennae)
- Up to 2 miles with 4 trees (with 15 dBi directional antennae)

### Line-of-sight (clear Fresnel zone)

- More than 40 miles (with 15 dBi directional antennae)



## Sample applications



## Technical specifications

CHARACTERISTIC	SPECIFICATION / DESCRIPTION
RF transmission rate	1.536 Mb/s
Ethernet throughput	935 Kb/s
Output power	+21 dBm (4 Watts EIRP used with 15 dBi antenna)
Receive sensitivity	-112 dBm at 10e-4 BER with 15 dBi antenna
Latency	< 2 ms – assuming a dedicated wireless link to client device
Jitter	±0.5 ms – depending on packet size, interference, and SNR
Power consumption	FX 0.6 W, TX 1.4 W
Voltage	4 to 48 VDC
Radio channels	12 non-overlapping
Automatic frequency select	Yes – radio channel automatically selected and adaptively optimized
Manual frequency mode	Yes
Status LEDs	Power, Ethernet Link, RF RX, RF TX, 4/Channel, and 6/Link Quality
MAC pass-through filter	Yes – can be disabled
Error correction technique	Sub-block error detection and retransmission
Adjacent-band rejection	SAW receiver filter attenuates cellular and pager interference
Enclosure type	NEMA 4X
Temperature range	-40° C to 70° C
Power over Ethernet	Includes injectors/power supplies – 9 to 48 VDC ready

## Ordering information

PART NUMBER	DESCRIPTION	CONTENTS
AW900x	Outdoor long range wireless Ethernet bridge	(2) AW900x outdoor radios, (2) power adapters, (2) POE injectors

©2004 – 2007 AvaLAN Wireless Systems Incorporated. All rights reserved. AvaLAN Wireless and the AvaLAN Wireless logo are registered trademarks of AvaLAN Wireless Systems Incorporated. All other trademarks are property of their respective owners. AvaLAN Wireless makes no representations or warranties with respect to the accuracy, utility, or completeness of the contents of this publication and reserves the right to make changes to specifications and product descriptions at any time without notice. No license, express or implied, by estoppel or otherwise, to any patents or other intellectual property rights is granted by this document. Particular uses or applications may invalidate some of the specifications and/or product descriptions contained herein. The customer is urged to perform its own engineering review before deciding on a particular application. AvaLAN Wireless products are not designed for use in medical, life saving, or life sustaining applications. 07.07.2007



Distributed by:  
 Grid Connect Inc. 1630 W. Diehl Rd. Naperville, IL 60563  
 +1 630 245-1445, +1 630 245-1717 FAX  
[www.ipenabled.com](http://www.ipenabled.com), [www.gridconnect.com](http://www.gridconnect.com)